

FISIOGRAFT HA

PASTE

A **synthetic biomaterial** used in dental and maxillofacial surgery to **fill bone cavities**, whether natural or pathological, based on polylactic acid and polyglycolic acid (PLGA) and hydroxyapatite (HA).

PLGA + Hydroxyapatite
Osseointegrable in 6-9 months

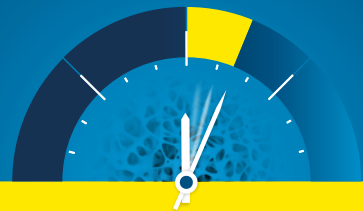
ALL
IN
ONE

A single
product
for every
defect



G Ghimas
D E N T A L

FISIOGRAFT HA PASTE



Osseointegrable in **6-9 MONTHS**

Physical form: paste

- Medical Device CLASS III
- Composition: PLGA 21% (210 mg) + Hydroxyapatite 15% (150 mg) + PEG 64% (640 mg)
- Pack of 2 syringes 1 ml (code: PFOF0070)
- Medical Device CLASS III
- Certified CE0426, ISO9001, ISO13485



PLGA + Hydroxyapatite

PLGA

The PLGA copolymer is a resorbable space maintainer that allows osteocytes to replace it in a relatively short period of time (4-6 months), until natural bone tissue is formed.



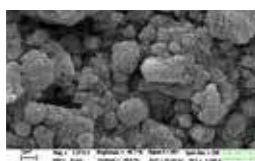
SEM PLGA magnification: 500X



PLGA histology

Hydroxyapatite

Hydroxyapatite ensures rapid vascularisation, promotes the advance of osteons, and acts as a space maintainer, providing the structural support that cells need to create the new bone matrix.



SEM: hydroxyapatite

ALL IN ONE

Ready to apply
and easily
shaped

When it comes into contact with blood or physiological solution, its becomes more solid, which allows the bone cavity to be filled by staying in place, and suitable for **spatula modelling**.



Applications

IMPLANTOLOGY: alveoli filling in post-extraction implants, minor maxillary sinus lift, split crest, filler in fenestrations and/or dehiscences, and as a membrane to cover grafts with autologous bone.

PERIODONTOLOGY: filling of pockets, furcations.

ORAL SURGERY: Filling of bone cavities after extractions, cystectomies, apicoectomies.



Maxillary sinus elevation



Maintaining volume



Periodontal surgery



Split crest



Post-extraction

The **ADVANTAGES** of **FISIOGRAFT HA PASTE**

- ✓ Biphasic synthetic biomaterial: **OSTEOCONDUCTION (PLGA) + OSSEOINTEGRATION (HA)**
- ✓ **NO ODDS RATIO:** SARS - BSE - HIV - HBV
- ✓ **PARTIALLY RADIOPAQUE**
- ✓ **IDEAL FOR ALL KINDS OF SPACES**, even hard-to-reach ones
- ✓ **EASILY SHAPED:** when it comes into contact with blood or physiological solution, it becomes more solid, which allows the bone cavity to be filled by staying in place, and suitable for spatula modelling



ALL
IN
ONE

A single
product
for every
defect

FISIOGRAFT: MORE THAN **100 PUBLICATIONS**

BIBLIOGRAPHY

- 1 - Hydroxyapatite Block Produced by Sponge Replica Method: Mechanical, Clinical and Histologic Observations. Antonio Scarano et al; Materials 2019, 12, 3079; doi:10.3390/ma12193079; (IF 2,97).
- 2 - A Human Clinical and Histomorphometrical Study on Different Resorbable and Non-Resorbable Bone Substitutes Used in Post-Extractive Sites. Preliminary Results. Ilaria De Tullio et al. Materials 2019, 12, 2408; doi:10.3390/ma12152408; (IF 2,97).
- 3 - Osteogenic magnesium incorporated into PLGA/TCP porous scaffold by 3D printing for repairing challenging bone defect. Yuxiao Lai, Ye Li, Huijuan Cao, Jing Long, Xinluan Wang, Long Li, Cairong Li, Qingyun Jia, Bin Teng, Tingting Tang, Jiang Peng, David Eglin7, Mauro Alini7, Dirk W Grijpma, Geoff Richards, Ling Qin. Biomaterials. 2019 Mar; 197:207-219.
- 4 - Bone regeneration strategies: Engineered scaffolds, bioactive molecules and stem cells current stage and future perspectives. AntalyaHo-Shui-Ling et al., Biomaterials Volume 180, October 2018, Pages 143-162.
- 5 - The effect of the type of HA on the degradation of PLGA/HA composites Ashutosh Naik, David V. Shepherd, Jennifer H. Shepherd, Serena M. Best, Ruth E. Cameron Materials Science and Engineering C 70 (2017) 824–831 2017 Elsevier.
- 6 - Stem cells, growth factors and scaffolds in craniofacial regenerative medicine. Viktor Tollemer et al, Genes & Diseases, Volume 3, Issue 1, March 2016, Pages 56-71.
- 7 - Apatiti Biomimetiche Per Sostituzione E Fissaggio Osseo: Il Ruolo Delle Nanoparticelle Nel Composito NHAP-PLLA (Biomimetic Apatite for Bone Replacement and Fixation: The Role of Nanoparticles in the NHAP-PLLA Composite) Bachelor's Degree Dissertation of Chiara Giordano.
- 8 - Alveolar bone dimensional changes of post-extraction sockets in humans: a systematic review. Van der Weijden F, Dell'Acqua F, Slot DE. J Clin Periodontol 2009; 36: 1048-1058.
- 9 - Valutazione dell'uso di un biomateriale nel trattamento dei difetti parodontali infraossei. (Evaluation of the use of a biomaterial in the treatment of intrabony periodontal defects). Briguglio F, Isola G, Lapi M, Briguglio R, Briguglio E. Italian Oral Surgery I.O.S. 2009; 8 (5): 247-55.
- 10 - Polylactide/polyglycolide copolymer in bone defect healing in humans. Bertoldi C, Zaffe D, Consono U. Biomaterials 2008; 29: 1817-23.
- 11 - Maxillary sinus augmentation with different biomaterials: a comparative histologic and histomorphometric study in man. Orsini G, Piattelli A, Pecora G, Piattelli M, Degidi M, Iezzi G, Scarano A. Best Poster Presentation Abstracts - 19th Annual meeting of the academy of osseointegration 03/2004.
- 12 - Guided Tissue Regeneration with a Synthetic Co-polymer of Polyglycolic and Polylactic Acid (Fisiograft® gel) in Fenestrations and/or Dehiscences Defects Around Implants: A Clinical Controlled Study at 1 Year. Rocchietta I, Piloni A, Rasperini G, Simion M. Poster Presentation Abstracts the 19th Annual meeting of the Academy of Osseointegration 03/2004; P118.
- 13 - Ridge preservation following tooth extraction using a polylactide and polyglycolide sponge as space filler: a clinical and histological study in man. Serino G, Biancu S, Iezzi G, Piattelli A. Clin Oral Impl. Res. 2003; 14: 651-58.



GHIMAS S.p.A.

Via Cimarosa, 85 - 40033 Casalecchio di Reno (BO) - Italy
+39 051 57 53 53 - info@ghimas.it - www.ghimas.it

